



Road Traffic
Management Corporation

FESTIVE SEASON ROAD TRAFFIC REPORT

1 DECEMBER 2013 - 11 JANUARY 2014



transport

Department:
Transport
REPUBLIC OF SOUTH AFRICA



INDEX		
Section	Topic	Page
1	Introduction	2
2	Summary	3
3	Traffic Law Enforcement	3
4	Driver Population	4
5	Vehicle Population	6
6	Traffic Volumes	9
7	Number of Fatal Crashes	10
8	Crashes per Day of Week	10
9	Crashes per Time of Day	12
10	Number of Fatalities	13
11	Fatalities per road user group	14
12	Severity of Fatal Crashes	16
13	Major Fatal Crashes Over Festive 2013/14	17
14	Media Liaison	20

1. INTRODUCTION

The 2013/14 Festive Season commenced on Sunday, 1 December 2013 to Saturday, 11 January 2014. The traffic volumes increased during the six weeks along major arterial routes during the school closure periods, the industry closure periods, the Christmas and New Year long weekends and all the subsequent weekends ahead of school re-opening.

Apart from people taking holidays mostly to the coastal areas, migrant workers return home to their families while some major churches hold prayer gatherings around the country. That period saw an increase in traffic law enforcement across the country.

As part of its Rolling Enforcement Plan; the Road Traffic Management Corporation (RTMC) in collaboration with its provincial and municipal traffic departments embarked on a major clean-up campaign that targeted public passenger transport vehicles from September 2013 onwards. The aim of this project was to concentrate on all unroadworthy, private and public transport motor vehicles as well as paying special attention to preventing crashes in hazardous locations and thus attempting to curb the fatality rate on our roads. Roadblocks, roadside checks, patrols and awareness campaigns were launched by various authorities during the months of November and December 2013 as a build-up to the Festive Season. Vehicles were stopped, searched and checked with specific emphasis placed on driver and vehicle fitness to clear our roads of killer offences before the critical, high traffic volume period.

During periods of peak traffic volumes, over the December/ January festive holidays, the issuing of information about fatal road traffic accidents, weather and road conditions and law enforcement actions, serves as a platform in the mass media to get road traffic safety information across to road users. Informing road users about the dangers of unsafe road usage and educating them on correct traffic participation is of vital importance in changing the perceptions and ultimately the behaviour of road users.

As in the past, the South African Police Services(SAPS) records the fatal crashes and fatalities including major crashes (high profile), and thereafter sends the data to the Road Traffic Management Corporation(RTMC) who capture, process and verify all statistics in order to compile consolidated reports.

The 30 day international practice which entails taking into account all people who die within 30 days after the occurrence of a road crash has been taken into consideration. This move will enable accountability and comparability for purposes of reporting against the Decade of Action targets.

2. SUMMARY

The number of driving licences issued increased by 489,881 (4.82%) from 10 155 165 at the end of 31 December 2012 to a total of 10 645 046 driving licences issued at the end of 31 December 2013.

The number of registered vehicles increased by 395,513 (3.73%) from 10 610 671 on 31 December 2012 to 11 006 184 vehicles on 31 December 2013.

The number of fatal crashes over Festive Season 2013/14 as on the 11 January 2014 was 1335.

The number of fatalities over Festive Season 2013/14 as on the 11 Jan 2014 was 1677.

3. LAW ENFORCEMENT INITIATIVES AND SUCCESSES

Not deterred by all the unruly conduct on the part of some of our road users, law enforcers at provincial and national level worked very hard and very closely together. Local enforcement officials also did their bit under trying circumstances.

It is a common cause that motorists will not use routes where there is heavy law enforcers' presence and visibility. Although some secondary and minor routes were kept in check, a lot of effort was devoted to major national routes straddling across the provinces, and these were but limited to;

- N1 between Gauteng and Limpopo;
- N1 between Gauteng, Free State and Western Cape;
- N2 between Eastern Cape and Western Cape;
- N2 between Eastern Cape and KwaZulu-Natal;
- N3 between Gauteng and KwaZulu-Natal;
- N4 between Gauteng and Mpumalanga;
- N4 between Gauteng and North West; and
- N12 between Gauteng, North West, Northern Cape and Western Cape.

During this period a total number of 845 road blocks were conducted; and

- 745 782 vehicles were stopped;
- 201 473 notices were issued;
- 2399 were discontinued;
- 2449 vehicles were impounded;
- 3170 drunk driving arrests were effected;
- 69 arrests for dangerous and negligent driving were effected, and
- 564 arrests for other offences.

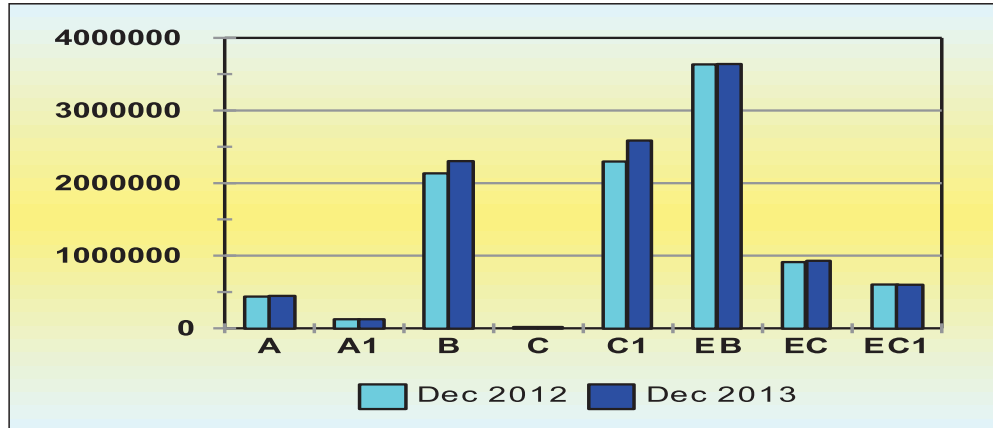
4. DRIVER POPULATION

4.1 Driving Licences Issued

The number of driving licences issued increased by 489,881 (4.82%) from 10,155,165 on 31 December 2012 to 10,645,046 on 31 December 2013. Detail on the number of driving licences issued per category is given in table and graphically reflected in the figure below:

Table 1 : Number of Driving Licences Issued				
Category	Dec 2012	Dec 2013	Change	% Change
A	437,914	446,772	8,858	2.02
A1	123,356	123,455	99	0.08
B	2,135,130	2,301,907	166,777	7.81
C	18,001	19,067	1,066	5.92
C1	2,296,011	2,586,914	290,903	12.67
EB	3,632,643	3,638,577	5,934	0.16
EC	910,885	929,236	18,351	2.01
EC1	601,225	599,118	-2,107	-0.35
Total	10,155,165	10,645,046	489,881	4.82

Figure 1: No of Driving Licences Issued per category

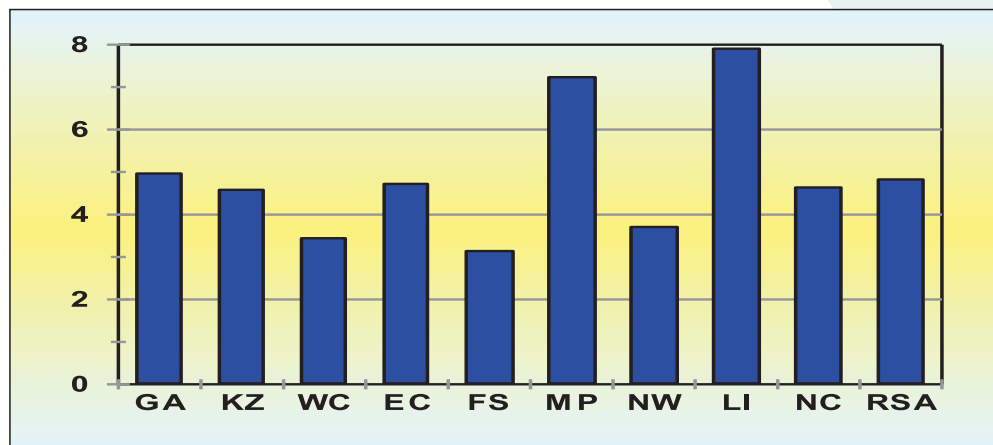


The number and percentage (%) of driving licences issued per category at the end of December 2013 is reflected in table 2.

Provincial information in this regard is given in table 2 and the percentage change with regard to all licences issued per Province is reflected in the figure 2.

Table 2 : Number of Driving Licences Issued per Province										
Year	GA	KZ	WC	EC	FS	MP	NW	LI	NC	RSA
Dec 2012	3,591,029	1,609,119	1,640,888	739,954	542,029	665,598	486,976	686,745	192,827	10,155,165
Dec 2013	3,769,370	1,682,844	1,697,300	774,905	559,035	713,739	505,029	741,051	201,773	10,645,046
Change	178,341	73,725	56,412	34,951	17,006	48,141	18,053	54,306	8,946	489,881
% Change	4.97	4.58	3.44	4.72	3.14	7.23	3.71	7.91	4.64	4.82

Figure 2: Percentage Change in Driving Licences Issued per Province



5. VEHICLE POPULATION

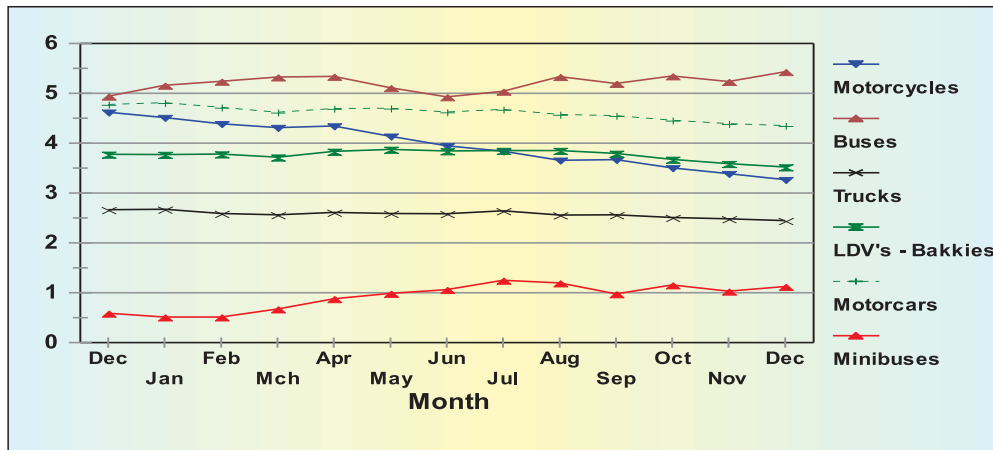
The number of registered vehicles increased by 395 513 (3.73%) from 10 610 671 on 31 December 2012 to 11 006 184 vehicles on 31 December 2013. Detail per type of vehicle is given in Table 3 below:

Table 3 : Number of Registered Vehicles	Number registered	Number registered	Change	% Change	% of Group	% of Total
Motorised Vehicles	Dec 2012	Dec 2013			Dec 2013	Dec 2013
Motorcars	6,110,556	6376656	266,100	4.35	61.66	55.52
Minibuses	285,855	289077	3,222	1.13	2.88	2.60
Buses	51,686	54494	2,808	5.43	0.52	0.47
Motorcycles	355,616	367231	11,615	3.27	3.59	3.23
LDV's - Bakkies	2,152,713	2228506	75,793	3.52	21.72	19.56
Trucks	342,122	350498	8,376	2.45	3.45	3.11
Other & Unknown	241,067	243461	2,394	0.99	2.43	2.19
Total Motorised	9,539,615	9,909,923	370,308	3.88	100.00	90.04
Towed Vehicles						
Caravans	104,845	104,594	-251	-0.24	9.54	0.95
Heavy Trailers	164,908	171,678	6,770	4.11	15.66	1.56
Light Trailers	784,484	803,297	18,813	2.40	73.28	7.30
Other & Unknown	16,819	16,692	-127	-0.76	1.52	0.15
Total Towed	1,071,056	1,096,261	25,205	2.35	100.00	9.96
All Vehicles	10,610,671	11,006,184	395,513	3.73		100.00

The information in table 3 shows that on a percentage basis the biggest change was for buses which increased by 5.43% to 54 494, followed by motorcars which increased by 4.35% to 6,376,656.

The monthly percentage change over the past year for specific types of vehicles as well as motorised and towed vehicles, are shown in the figures below:

Figure 3: Annual Percentage Change in Motorised Vehicles per month



The total motor vehicle population per province for December 2012 and December 2013 respectively, is given in table 4 and reflected in figure 5 below:

Table 4 : Number of Registered Vehicles per Province	Number registered Dec 2012	Number registered Dec 2013	Change	% Change	% of Total Dec 2013
Gauteng	4,112,343	4,271,588	159,245	3.87	38.81
KwaZulu-Natal	1,438,997	1,488,702	49,705	3.45	13.53
Western Cape	1,698,173	1,752,417	54,244	3.19	15.92
Eastern Cape	715,548	734,139	18,591	2.60	6.67
Free State	579,461	592,665	13,204	2.28	5.38
Mpumalanga	718,213	760,170	41,957	5.84	6.91
North West	546,669	564,193	17,524	3.21	5.13
Limpopo	558,813	589,751	30,938	5.54	5.36
Northern Cape	242,454	252,559	10,105	4.17	2.29
RSA	10,610,671	11,006,184	395,513	3.73	100

Figure 4: Annual Percentage Growth in Vehicle Population per Province

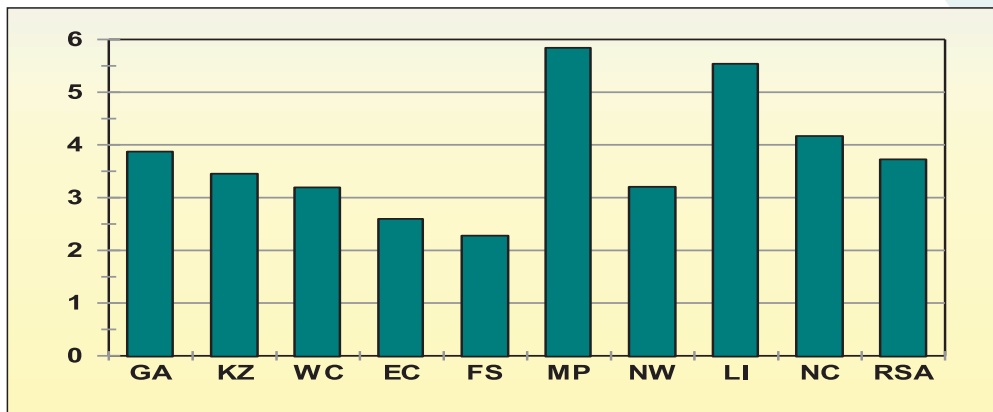


Figure 5: Annual Percentage Growth in Vehicle Population per Province

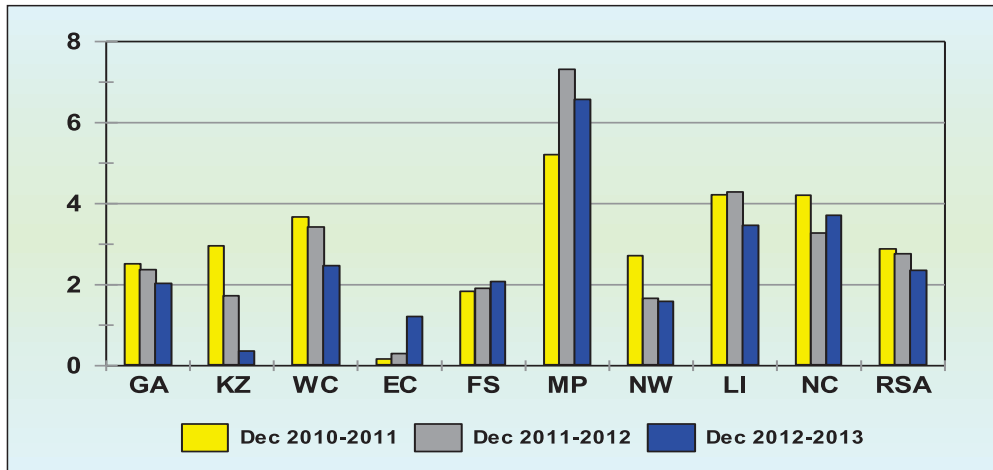


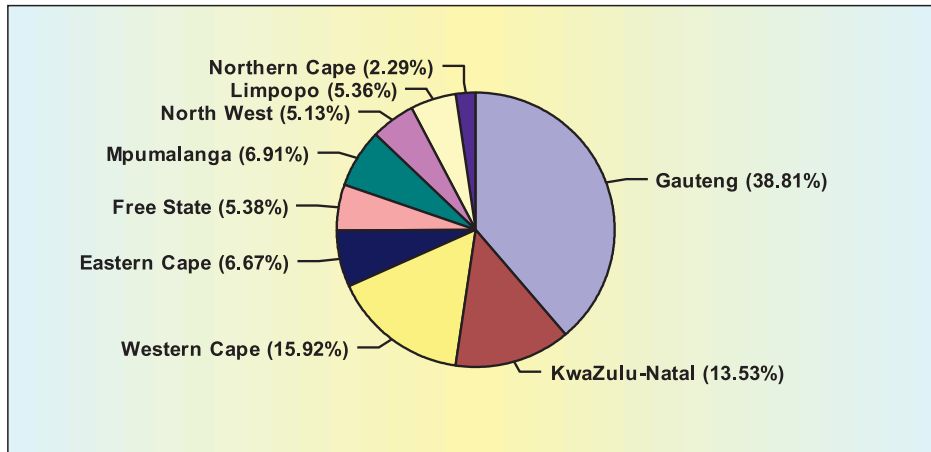
Table 5: % Annual Growth in the Motor Vehicle Population

No. of Vehicles	GA	KZ	WC	EC	FS	MP	NW	LI	NC	RSA
Dec 2010	386,921	107,886	147,986	64,888	81,468	80,501	65,784	45,926	31,675	1,013,035
Dec 2011	396,651	111,080	153,420	64,996	82,964	84,692	67,572	47,864	33,008	1,042,245
Dec 2012	406,052	113,000	158,677	65,189	84,551	90,889	68,694	49,917	34,089	1,071,056
Dec 2013	414,313	113,407	162,599	65,983	86,309	96,865	69,787	51,647	35,355	1,096,261
% Change										
Dec 2010-2011	2.51	2.96	3.67	0.17	1.84	5.21	2.72	4.22	4.21	2.88
Dec 2011-2012	2.37	1.73	3.43	0.30	1.91	7.32	1.66	4.29	3.28	2.76
Dec 2012-2013	2.03	0.36	2.47	1.22	2.08	6.58	1.59	3.47	3.71	2.35

Over the past year from December 2012 to December 2013 the biggest percentage growth in total vehicles was recorded in Mpumalanga with a growth of 6.58% followed by Northern Cape with a growth of 3.71% and Limpopo with 3.47%.

The percentage vehicles registered per province on 31 December 2013 is reflected in the graph below:

Figure 6: Percentage of Vehicles Registered per province



The information in the graph above shows that 38.81% of all vehicles are registered in Gauteng; 15.92 in Western Cape and 13.53% in KwaZulu-Natal.

6. TRAFFIC VOLUMES

Traffic volumes on the main routes over the Festive season for the years 2012/13 and 2013/14 are given in the Table 6 below.

Table 6: Traffic Volumes Over Festive

Route	Site Name	2012/2013	2013/2014	Change	% change
N1	Kranskop Plaza	778 434	754336	-24098	-3.0957
N1	Huguenot Plaza	539 173	534284	-4889	-0.90676
N2	Groot Brak	645 269	904728	259459	40.20943
N4	Middelburg	987 730	606246	-381484	-38.6223
Total		2950606	2799594	-151012	-5.118

The information in the table 6 shows an overall decrease in traffic volumes of about 151012 vehicles (5.11%) from 2 950 606 in 2012/13 to 2 799 594 vehicles during 2013/14. On a percentage basis the biggest increase was recorded at Groot Brak toll plaza on the N2 having an increase of 40.21%. The biggest decrease was recorded on Middelburg toll Plaza on the N4 with a decrease of 38.62%.

7. NUMBER OF FATAL CRASHES

The number of fatal crashes per Province over the Festive Season 2013/14 is given in the table below:

Table 7: Number of Fatal Crashes per Province over Festive										
Year	GA	KZ	WC	EC	FS	MP	NW	LI	NC	RSA
2012/13	215	261	142	161	71	126	86	146	39	1247
2013/14	252	258	122	179	133	127	81	142	41	1335
change	37	-3	-20	18	62	1	-5	-4	2	88
% change	17.21	-1.15	-14.08	11.18	87.32	0.79	-5.81	-2.74	5.13	7.06

The number of fatal crashes increased by 88 (7.06%) from 1247 crashes over the same period the previous year to 1335.

With the exception of KwaZulu-Natal, Western Cape, North West and Limpopo, an increase in the number of fatal crashes was recorded in all other provinces. On a provincial percentage basis the biggest increases were recorded as follows:

- Free State: increase of 62 (87.32%) from 71 to 133; and
- Gauteng: increase of 37 (17.21%) from 215 to 252.

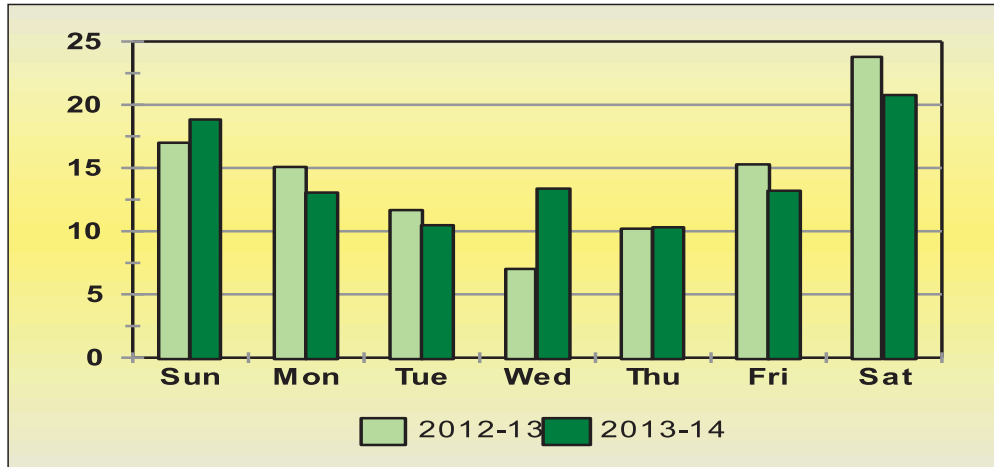
8. CRASHES PER DAY OF WEEK

The percentage of fatal crashes per day of the week per province during the 2013-2014 Festive Season is given in Table 8 below and the national figures in this regard.

Table 8: Percentage of Fatal Crashes per Day-of-Week								
Province	Sun	Mon	Tue	Wed	Thu	Fri	Sat	Total
Gauteng	20.00	11.11	8.89	11.11	6.67	20.00	22.22	100
Kwa-Zulu Natal	19.80	11.88	8.91	19.80	9.90	12.87	16.83	100
Western Cape	9.72	15.28	12.50	19.44	9.72	9.72	23.61	100
Eastern Cape	19.20	12.80	9.60	10.40	12.80	13.60	21.60	100
Free State	11.54	15.38	11.54	15.38	11.54	15.38	19.23	100
Mpumalanga	26.42	11.32	9.43	7.55	7.55	16.98	20.75	100
North West	24.10	16.87	13.25	10.84	9.64	4.82	20.48	100
Limpopo	16.67	12.50	9.38	11.46	9.38	17.71	22.92	100
Northern Cape	20.00	5.00	15.00	15.00	20.00	10.00	15.00	100
Total	18.84	13.04	10.47	13.37	10.31	13.20	20.77	100

Table 9: Percentage of Fatal Crashes per Day of Week							
Year	Sun	Mon	Tue	Wed	Thu	Fri	Sat
2012-13	16.99	15.07	11.68	7.01	10.19	15.29	23.78
2013-14	18.84	13.04	10.47	13.37	10.31	13.20	20.77

Figure 7: Percentage of Fatal Crashes per Day of week



The information above shows that 20.77% of the weekly crashes happened on a Saturday during 2013/14. During 2012-2013 56.06% of all fatal crashes happened over weekends from Friday to Sunday, However during the 2013/2014 Festive Season 52.82% of all fatal crashes happened over weekends from Friday to Sunday.

The province with the highest Friday percentage crashes was the Gauteng at 20.00% followed by the Limpopo with 17.71%.

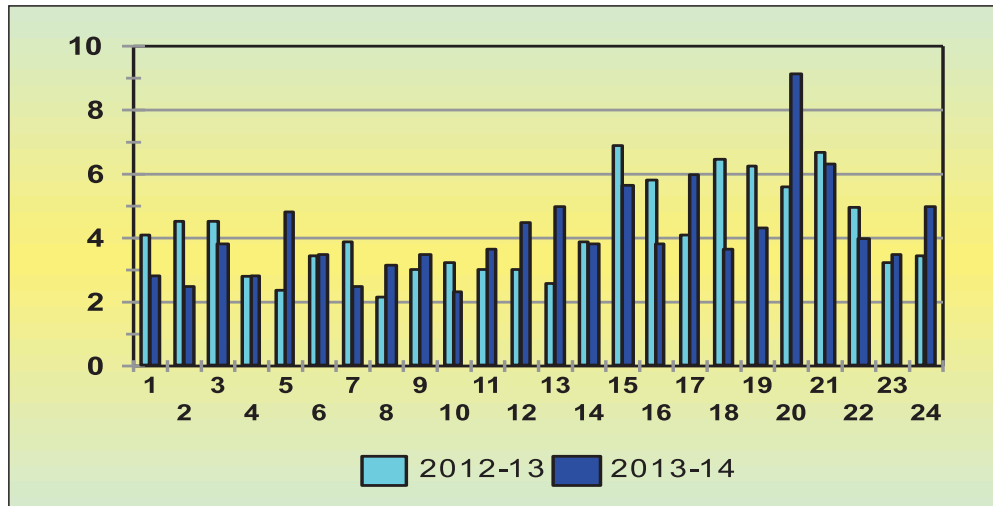
The province with the highest Saturday percentage of fatal crashes is the Western Cape at 23.61% followed by Limpopo with 22.92%.

The province with the highest Sunday percentage of fatal crashes is the Mpumalanga at 26.42% followed by North West with 24.10%.

9. NUMBER OF CRASHES PER TIME OF DAY

The percentage of fatal crashes per time of day during the 2013/2014 Festive Season is reflected in the figure below:

Figure8: Percentage of Fatal Crashes per Time of Day



The above information shows the following percentage of crashes for the respective hours of the day during the 2013/2014 Festive Season.

- From 06:00 to 12:00 : 23,19%;
- From 12:00 to 18:00 : 32,39%;
- From 18:00 to 00:00 : 35,88%; and
- This totals to 91.46% of all daily fatal crashes.

During the 2013/2014 festive season 8.54% of the daily fatal crashes happened during the early hours of the morning, between midnight 00:00 and 06:00 in the morning.

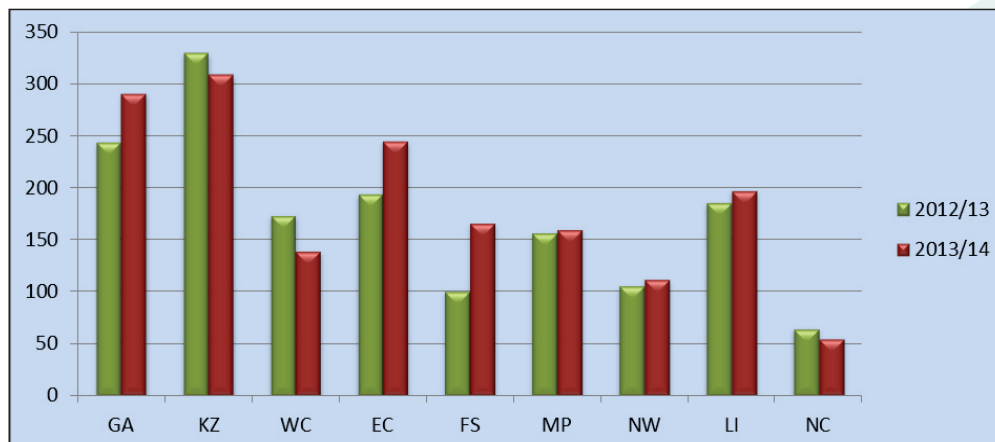
35.88% of the daily crashes happened between 18:00 in the evening and midnight (00:00). About 44.42% of the daily crashes happened generally during hours of darkness, between 18:00 in the evening and 06:00 the next morning.

10. NUMBER OF FATALITIES

The number of fatalities per Province over Festive Season 2013/14 is given in table 10 and figure below:

Table 10: Number of Fatalities per Province over Festive										
Year	GA	KZ	WC	EC	FS	MP	NW	LI	NC	RSA
2012/13	244	330	174	194	101	157	106	186	65	1557
2013/14	291	309	139	245	166	161	112	198	55	1677
change	47	-21	-35	51	65	4	6	12	-10	120
% change	19.34	-6.34	-20.03	26.32	64.60	2.26	5.66	6.37	-14.66	7.68

Figure 9: Number of Fatalities per Province for 2012/13 and 2013/14



The number of fatalities increased by 120 (7.68%) from 1 557 fatalities over the same period the previous year to 1 677.

With the exception of KwaZulu-Natal, Western Cape and Northern Cape all other provinces recorded a decreases in fatalities. Provincially the biggest increases were recorded as follows:

- Free State: increase of 65 (64.60%) from 101 to 166;
- Eastern Cape: increase of 51 (26.32%) from 194 to 245; and
- Gauteng: increase of 47 (19.34%) from 244 to 291.

11. FATALITIES PER ROAD USER GROUP

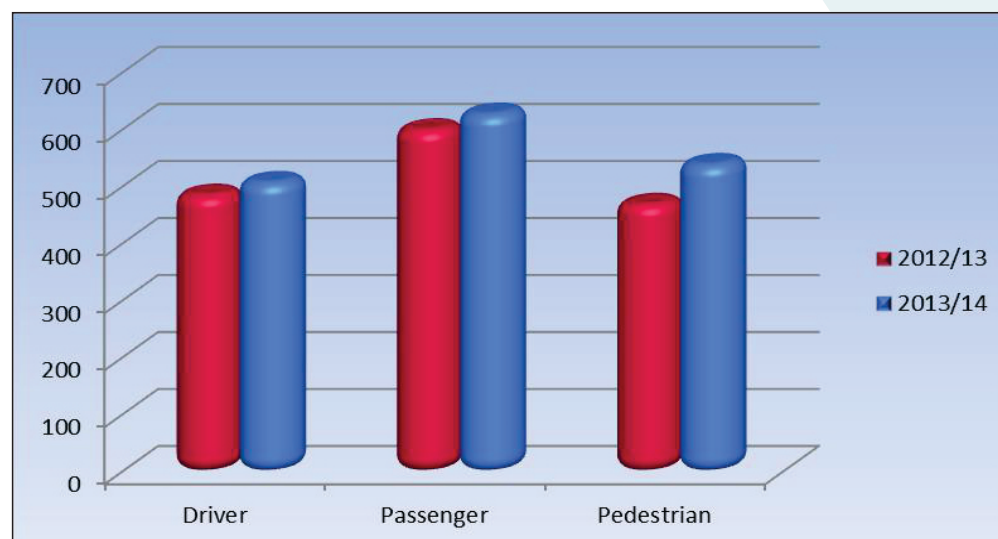
The number of fatalities per road user group (drivers, passengers and pedestrians) over the Festive period for 2013/14 is shown in the Table 11 below:

Table 10: Fatalities per user group

Year	User Group	GA	KZ	WC	EC	FS	MP	NW	LI	NC	RSA
2012/13	Driver	86	95	47	45	36	74	25	58	20	486
	Passenger	54	120	72	106	50	46	47	77	29	601
	Pedestrian	104	115	55	43	15	37	34	51	16	470
	Total	244	330	174	194	101	157	106	186	65	1557
2013/14	Driver	90	70	40	60	67	69	42	54	17	508
	Passenger	90	116	40	113	42	55	49	101	24	628
	Pedestrian	112	124	59	72	58	36	21	43	14	540
	Total	291	309	139	245	166	161	112	198	55	1677
Change	Driver	4	-25	-7	15	31	-5	17	-4	-3	22
	Passenger	36	-4	-32	7	-8	9	2	24	-5	27
	Pedestrian	8	9	4	29	43	-1	-13	-8	-2	70
	Total	47	-21	-35	51	65	4	6	12	-10	120
% Change	Driver	4.19	26.45	14.83	32.59	84.72	-6.09	68.00	-6.47	15.59	120.07
	Passenger	65.93	-3.70	44.40	6.55	-16.88	19.81	4.26	30.54	16.84	45.27
	Pedestrian	7.69	7.50	7.44	68.49	287.92	-2.86	38.24	15.53	-9.56	312.86
	Total	77.80	22.65	51.78	107.63	355.76	10.86	34.02	8.54	41.98	478.21

The above information on the number of fatalities per road user group is also reflected in the graph below:

Figure 10: Number of Fatalities per road user group



The numbers of fatalities per user group were all recorded with an increase. Driver fatalities showed an increase of 22 from 486 to 508, Passenger fatalities showed an increase of 27 from 601 to 628, Pedestrian fatalities showed an increase of 70 from 470 to 540.

Figure 11: Percentage of Driver Fatalities per Province

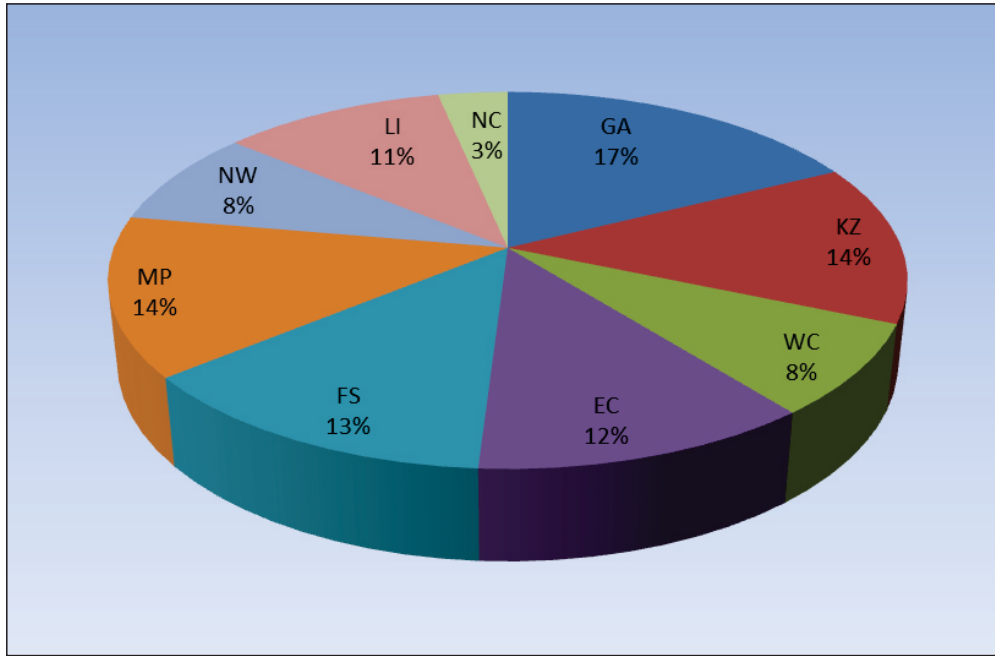


Figure 12: Percentage of Passenger Fatalities per Province

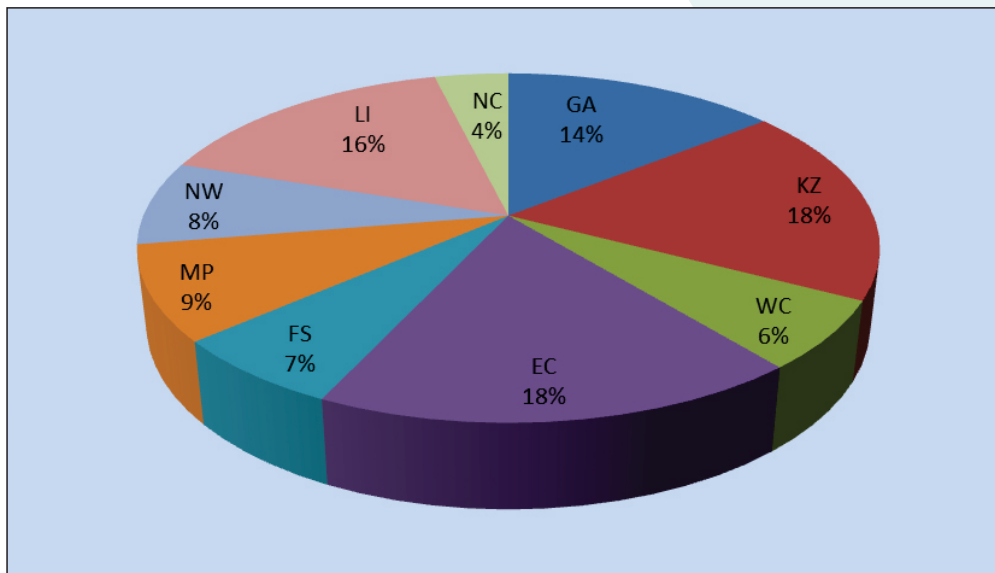
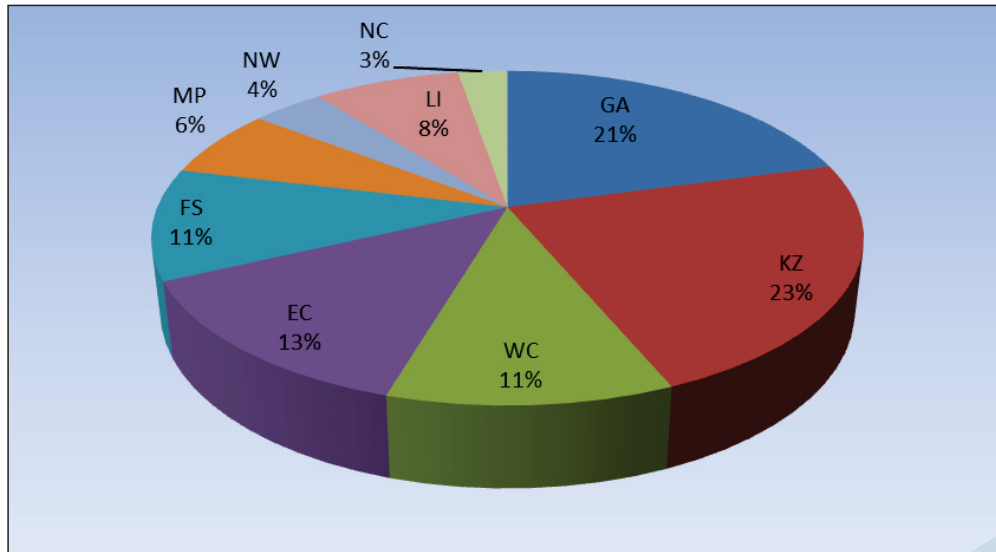


Figure 13: Percentage of Pedestrian Fatalities per Province



12. SEVERITY OF FATAL CRASHES

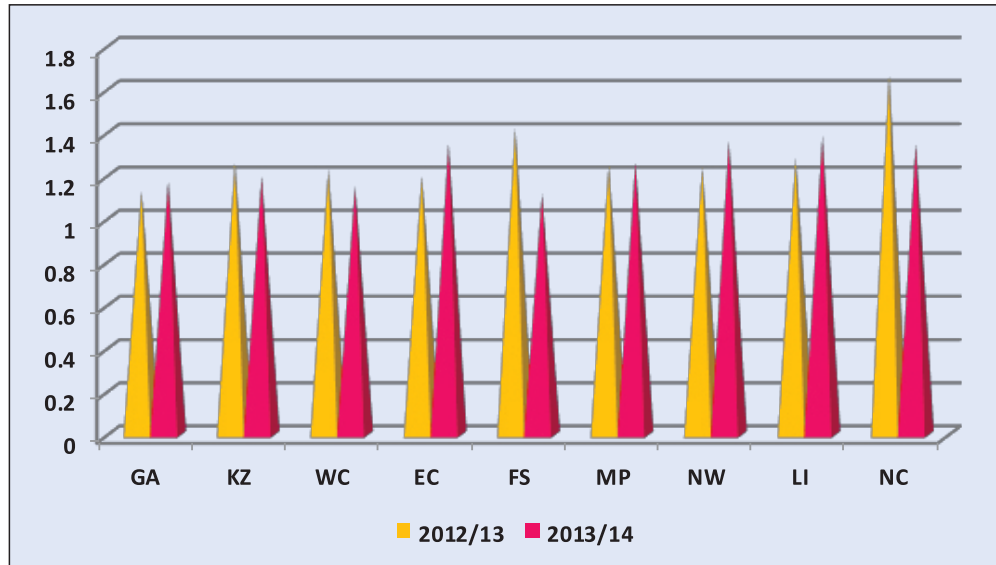
The severity of fatal crashes increased by 0.03 (2.39%) from 1.25 during 2012/2013 to 1.28 during 2013/2014. The individual provincial severity rates are shown on table 12 below:

Year	GA	KZ	WC	EC	FS	MP	NW	LI	NC	RSA
2012/13	1.13	1.26	1.23	1.2	1.42	1.25	1.24	1.28	1.67	1.25
2013/14	1.18	1.20	1.15	1.35	1.12	1.26	1.36	1.39	1.35	1.28
change	0.05	-0.06	-0.08	0.15	-0.30	0.01	0.12	0.11	-0.32	0.03
% change	4.23	-4.92	-6.28	12.70	-21.45	1.13	9.79	8.24	-19.16	2.39

The information in the table above shows that the severity rate in Eastern Cape increased by 12.7% with North West being second with 9.79%. The highest decrease rate was recorded for Free State.

The provincial rates for the two comparative years in this regard are also reflected in the figure below:

Figure 14: Severity of Crashes per Province (Average no. of fatalities/crashes) over Festive



13. MAJOR FATAL CRASHES OVER FESTIVE SEASON 2013/2014

13.1 Major Crashes Criteria

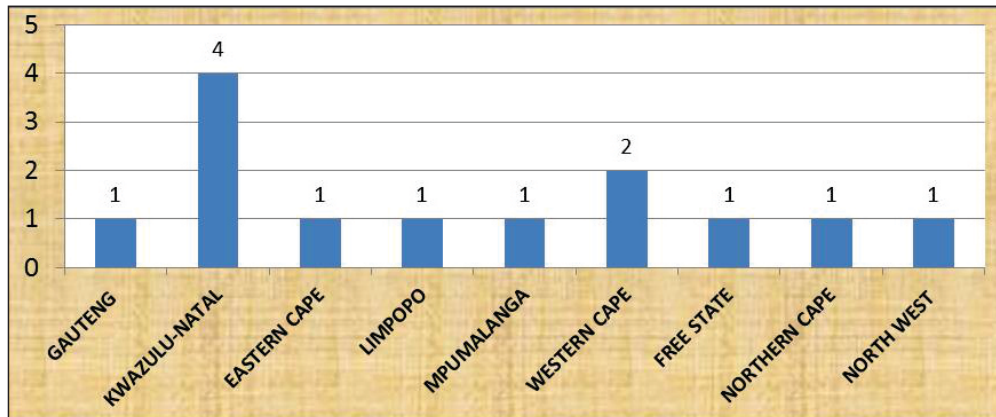
- Major Crashes are investigated based on the following criteria:
- Crashes where 5 or more people died;
- Crashes where there are 4 or more vehicles involved with a fatality;
- Hazardous chemical crashes with a fatality; and
- High profile crashes.

13.2. 2013/14 Major Crashes Festive Report

A total number of 13 major crashes were investigated.

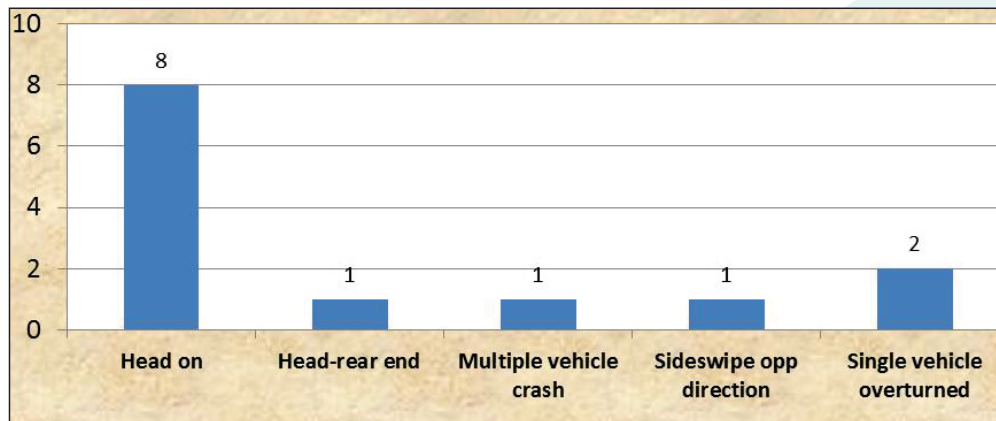
An approximate total of 98 people were killed as a result of the major crashes and approximately 84 people sustained injuries in the major crashes.

Figure 16: Number of major crashes per Province



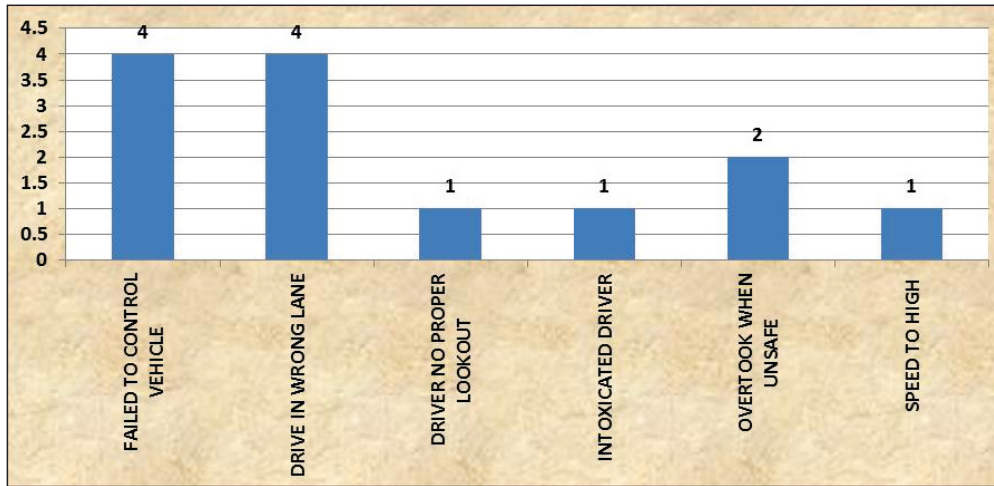
The figure above provides the number of major crashes investigated per province for the period under review. Most crashes were investigated in KwaZulu-Natal

Figure 17: Number of major crashes per crash type



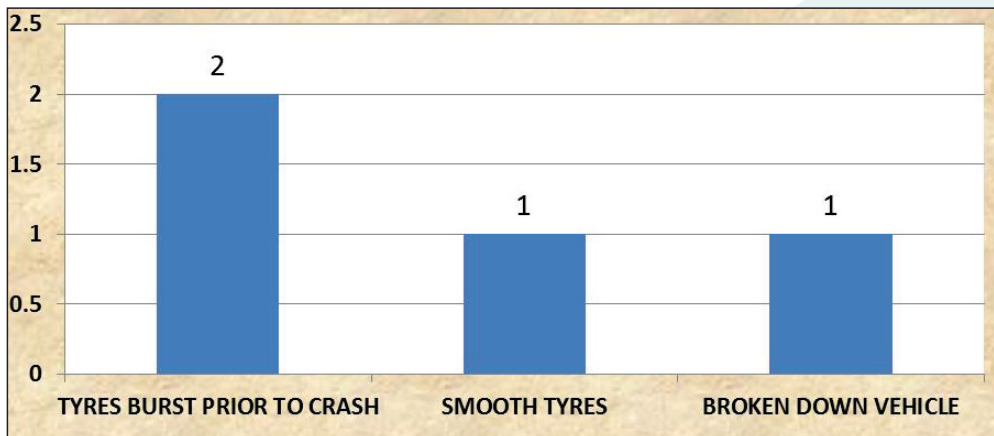
The figure above shows the number of major crashes per crash type. Most crashes occurred as a result of head collisions as compared to other types.

Figure 18: Contributory Factors for Major Crashes Human



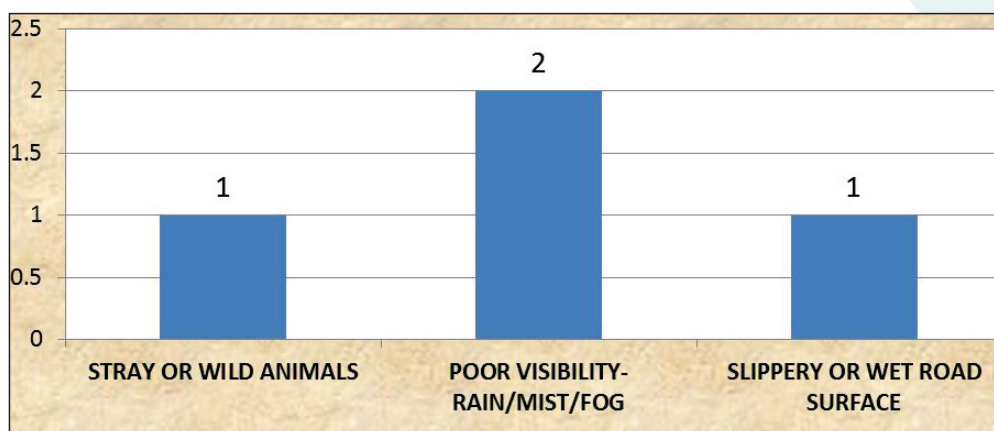
The figure above provides the human contributory factors, with losing control and driving in the wrong lane as the two leading factors.

Figure 19: Contributory Factors for Major crashes – Vehicle



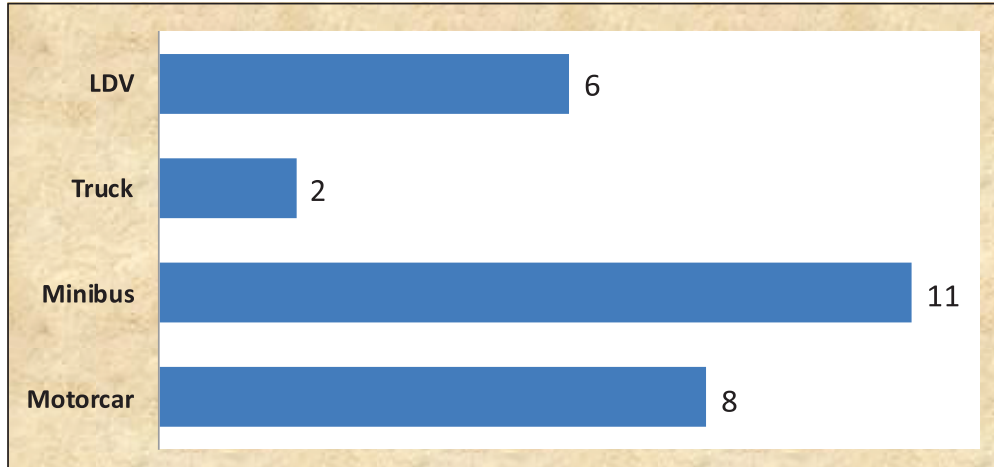
The figure above shows the vehicle factor with tyre burst in the lead.

Figure 20: Contributory Factors for Major Crashes – Road and Environment



The figure above provides the road and environment factors with poor visibility being in the lead.

Figure 21: Number of Vehicle per Type involved in Major Crashes



The figure above shows the number of times a vehicle type was involved in major crashes. Minibus is in the lead with 11 times followed by motorcars with 8 times.

14. MEDIA LIAISON

A total of 1000 interviews were conducted on various local, regional, printed and electronic media, for the period of 1 Dec 2013 to 07 Jan 2014 including Press Releases and Statements.

Road Traffic Management Corporation

Physical Address

Boardwalk Office Park
Boardwalk Boulevard
Faerie Glen
0043

Private Bag X147
Pretoria
0001

Telephone Number

012 999 5200

Website Address

www.rtmc.co.za

